

# APPLICATION GUIDE

2020/2021



**GellifiQue®**  
PROFESSIONAL

[www.gellifique.com](http://www.gellifique.com)

[info@gellifique.co.uk](mailto:info@gellifique.co.uk)

# GEL POLISH

## APPLICATION GUIDE

Please ensure that you are qualified in UV/LED GEL POLISH application to use this product.

### ESSENTIALS

- Dry manicure essentials
- Gellifique® Acid Free Bonder / Primer
- Gellifique® Nail Surface Cleanser
- Gellifique® GEL POLISH
- Gellifique® Choice of Top and Base coat
- A 48W UV/LED lamp - 365nm x 405nm with a low heat mode

### PRODUCT FEATURES

- Vegan & Cruelty Free
- Premium Formula
- A wide range of top and base coats
- Perfectly pigmented
- Do not shrink or bubble
- Low odour
- Full coverage
- Limited edition colours
- Long lasting
- Minimum tack after curing
- Fast curing



# APPLICATION GUIDE

## NAIL PREP

- Sanitise your hands and your client's hands.
- Whenever possible please wear gloves. We recommend completing all nail treatments in gloves to avoid contact of uncured products with skin.
- Do not use cuticle softening products or warm water.
- Perform a dry manicure by gently pushing back the cuticle area and removing any non living tissue. Use an e-file for this step if you are trained to use one.
- Using a 240 grit nail file, shape the free edge of the nail.
- Using a buffer or a buffing block remove the shine from the entire nail plate.
- Remove the dust using a nail brush and cleanse the nail with a lint free wipe and Isopropyl Alcohol solution or a specialised cleanser
- Apply sparingly the Gellifique® Acid Free Nail Bonder / Primer to the natural nail and let it air dry. Avoid skin contact. Avoid using on clients with skin sensitivities.





## PRODUCT APPLICATION

- Select your preferred Gellifique® Base Coat (find product details on-line or in our product catalogue) and apply in an even and thin layer. Do not let it run into the cuticle area.
- Apply to all 5 fingers and seal the free edge. Cure for 30 seconds LED or 120 seconds UV.
- Apply a thin coat of the selected Gel Polish Colour, sealing the free edge and cure it as above.
- Many of the Gellifique® Gel Polish Colours provide full coverage with one coat, however, we recommend always applying two coats of colour but ensuring that each coat is applied thinly. The thickness of each colour coat directly affect the longevity of the gel polish manicure.
- Apply a second coat of colour, seal the free edge and cure as above.
- Our Gel Polish Colours are perfectly pigmented to suit each shade to ensure an even and thorough cure.
- To apply the Gellifique® Ultra Seal for added strength, cure the gel polish colour as normal and apply a thin coat of the product, capping the free edge. Cure for 60 seconds LED or 120 seconds UV.
- Select a Gellifique® Top Coat and apply the product, cure as above.
- There is no need to cleanse after the final cure as all of the Gellifique® Top Coats are tack free.
- If you are using the Gellifique® Velvet Matte Top Coat please cure this product on a low heat setting with LED or 120 seconds with UV for the maximum comfort of your client. Matte Top Coats normally have a higher exothermic reaction compared to others.



## PRODUCT REMOVAL

- Sanitise your hands and the client's hands.
- Reduce the nail length.
- Using a 150 grit manual file or an e-file (if trained) take down the bulk of the product from each nail.
- Work around various areas to avoid heat build up to the natural nail and discomfort for the client.
- Change to a 180 grit file as you get closer to the natural nail.
- Once the product is thinned down soak a Gellifique® Lint Free Wipe in Acetone and place on the nail and wrap in tin foil.
- Soak for 15 minutes and scrape off any softened product. Re - wrap if necessary and wait a further 5 - 10 minutes.
- Any left over product can be gently buffed off the nails.
- To start a new product application, please follow the relevant section in this application guide.
- Apply cuticle oil if there is no follow up manicure service.

## RECOMMENDATIONS

- Always avoid skin contact with uncured products.
- Please do not attempt to remove any gel residue that is still hard.
- Please use the tools which you have been trained with for product removal.
- Please take care with pressure and use precision during the removal process in order to avoid overfiling the natural nail.
- For a manual file removal we recommend switching from 150 grit nail file to a 180 grit file half way and then down to a 240 grit.
- Please always exercise your professional judgement and advise your customer on an appropriate nail enhancement treatment depending on the condition of their natural nails.

# BLOOMING GEL

## APPLICATION GUIDE

Please ensure that you are qualified in UV/LED GEL POLISH application to use this product.



### ESSENTIALS

- Dry manicure essentials
- GellifiQue® Acid Free Bonder / Primer
- GellifiQue® BLOOMING GEL
- GellifiQue® choice of Top and Base coat
- A 48W UV/LED lamp - 365nm x 405nm with a low heat mode

### PRODUCT FEATURES

- Vegan & Cruelty Free
- Watercolour effect
- Air brush effect
- Flower effect
- Tie-dye effect

# APPLICATION GUIDE

## NAIL PREP

- Follow the guidelines for Nail Prep in the relevant section of this application guide.

## PRODUCT APPLICATION

- Apply a thin layer of Gellifique® Microcrystal Base Coat and cure for 30 seconds LED or 120 seconds UV.
- Apply 2 coats of Gellifique® Gel Polish Colour curing between coats.
- Apply a coat of Gellifique® Blooming Gel and do not cure..
- Apply a Gellifique® Gel Polish Colour of your choice to a desired area over the uncured Blooming Gel and allow time for the product to work. The gel will disperse on the nail, creating a “bloom” effect.
- Once you are happy with the created design, cure the product for 60 seconds LED or 120 seconds UV.
- Once you are happy with the created design, cure the product for 60 seconds LED or 120 seconds UV.
- Please note it's important to use the full Gellifique® System for best results as the products have been calibrated to work well together.



## PRODUCT REMOVAL

- Follow the product removal guidelines for UV/LED Gel Polish Colour.

# TRANSFER GEL

## APPLICATION GUIDE

Please ensure that you are qualified in UV/LED GEL POLISH application to use this product.



### ESSENTIALS

- Dry manicure essentials
- Gellifique® Acid Free Bonder / Primer
- Gellifique® Nail Surface Cleanser
- Gellifique® TRANSFER GEL
- Gellifique® RUBBER TOP COAT
- A 48W UV/LED lamp - 365nm x 405nm with a low heat mode



### PRODUCT FEATURES

- Vegan & Cruelty Free
- Excellent nail art foil transfer



# APPLICATION GUIDE

## NAIL PREP

- Follow the guidelines for Nail Prep in the relevant section of this application guide.

## PRODUCT APPLICATION

- Apply a thin layer of Gellifique® Microcrystal Base Coat and cure for 30 seconds LED or 120 seconds UV.
- Apply 2 coats of Gellifique® Gel Polish Colour curing between coats as above.
- Apply a coat of Gellifique® Transfer Gel and cure as above.
- Apply a nail art foil of your choice as you would normally and press into the sticky inhibition layer.
- Gently peel away the foil leaving behind your design. Once you are happy with the created design, apply a thin layer of Gellifique® Microcrystal Base Coat and cure the product for 60 seconds LED or 120 seconds UV.
- File off any excess foil around the free edge to ensure the best application of the Gellifique® Top Coat.
- Seal the design with a Gellifique® Rubber Top Coat or a thin coat of Gellifique® Clear Apex Gel or Hard Builder Gel and cure as above.

## PRODUCT REMOVAL

- Follow the product removal guidelines for UV/LED Gel Polish Colour.



- Gellifique® gel products have been formulated to be low tack after the cure in order to reduce the chance of skin contact with uncured products. Thus, Transfer Gel is a must have product for application of nail art foil.

# APEX GEL

## APPLICATION GUIDE

Please ensure that you are qualified in SOAK - OFF UV/LED  
BUILDER GEL application to use this product.

### ESSENTIALS

- Dry manicure essentials
- GellifiQue® Acid Free  
Bonder / Primer
- GellifiQue® Nail Surface Cleanser
- GellifiQue® APEX GEL
- GellifiQue® choice of Top and Base coat
- A 48W UV/LED lamp - 365nm x 405nm  
with a low heat mode

### PRODUCT FEATURES

- Vegan & Cruelty Free
- Premium Formula
- Low odour
- Self levelling
- Removes by filing or soak off
- Can be used for natural nail overlay  
and medium length enhancements



### PRODUCT DETAILS

**APEX GEL - EXTEND** is a full spectrum, soak off builder gel in a bottle. It can be used for natural nail overlay and nail enhancements (extension) of up to 0.5 cm. For a longer nail enhancement please use the GellifiQue® HARD BUILDER GEL system.

**APEX GEL - STRENGTHEN** is a flexible, fine textured soak off gel that allows for an easier application and effectively protects the natural nail making it resilient to bending. It can be used to strengthen the natural nail. Not suitable for sculpting.

# APPLICATION GUIDE

## NAIL PREP

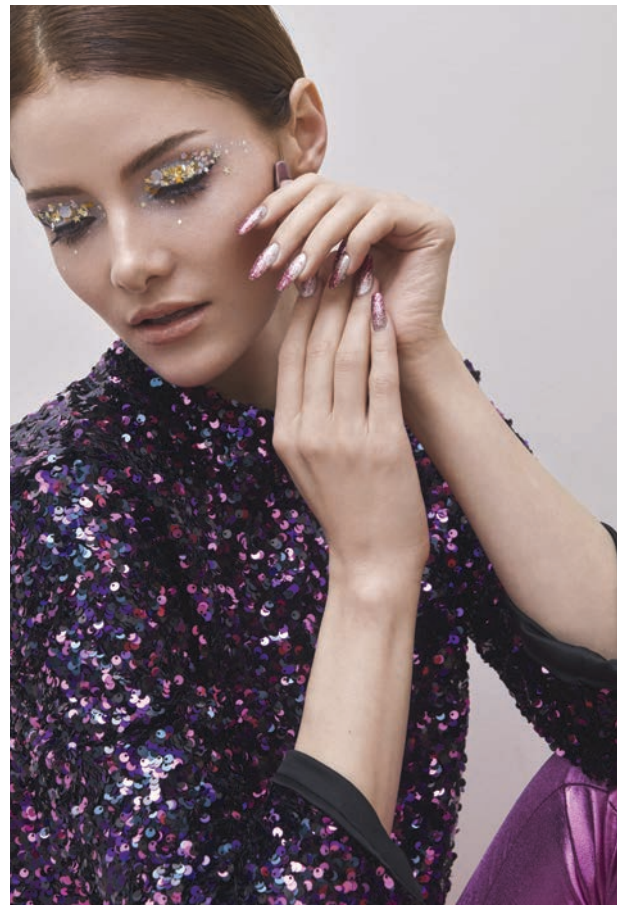
- Sanitise your hands and your client's hands.
- Whenever possible please wear gloves. We recommend completing all nail treatments in gloves to avoid contact of uncured products with skin.
- Do not use cuticle softening products or warm water.
- Perform a dry manicure by gently pushing back the cuticle area and removing any non living tissue. Use an e-file if you are trained to use one.
- Using a 240 grit nail file shape the free edge of the nail.
- Using a buffer or a buffing block remove the shine from the entire nail plate.
- Remove the dust using a nail brush and cleanse the nail with a lint free wipe and Isopropyl Alcohol solution such as Gellifique Antiseptic Spray.
- Apply sparingly the Gellifique Acid Free Primer to the natural nail and let it air dry. Avoid skin contact. Avoid using on clients with skin sensitivities.

## PRODUCT APPLICATION

- Apply a thin layer of Gellifique Microcrystal Base Coat and cure for 30 sec with LED or 60 sec with UV.
- Apply a thin coat of Gellifique® Apex Gel and cure 60 sec with LED or 120 sec with UV.
- Apply a medium sized bead of the gel and spread it side to side moving the product down, towards the free edge. Place the hand upside down for a few seconds to allow the product to self level.
- To ensure the best application around the cuticle area take the Gellifique® Liner Brush and using the tip move the product around the cuticle area and down the side walls for an even coverage.
- Avoid thick product build up around cuticle areas as this will cause the product to lift later. Seal the free edge with product. Cure on a low heat setting as above.
- Once you have achieved the desired length of the extension wipe the inhibition layer off and file the enhancement into the desired shape.
- Cleanse again and apply gel polish colour. No base coat is required.

## PRODUCT INFILL / REBALANCE

- Sanitise your hands and your client's hands.
- Whenever possible please wear gloves. We recommend completing all nail treatments in gloves to avoid contact of uncured products with skin.
- Using a manual file or an e-file (if trained) file away any lifted product and roughen the nail surface using a 180 / 150 grit file. File and shape the nail and cleanse as you would normally to remove product dust.
- Apply sparingly the Gellifique® Acid Free Nail Bonder / Primer to the natural nail and let it air dry. Avoid skin contact. Avoid from using on clients with skin sensitivities.
- Apply a thin coat of Base Coat by Gellifique® to the entire nail surface including the remaining nail enhancement and cure for 30 sec. LED or 60 sec. UV. Repeat the process on the other hand.
- Working on one finger at a time apply a thin layer of Apex Gel by Gellifique® and without curing place a small bead of product close to the cuticle area. Move the product down the nail towards the free edge. Allow the product to self level.
- To ensure the best application around the cuticle area take the Gellifique® Liner Brush and using the tip move the product around the cuticle area and down the side walls for an even coverage.
- Flash cure in the lamp on a low heat mode with LED or 120 seconds with UV and move to the other hand repeating the process. As soon as you have completed the infill on the opposite hand flash cure by starting the low heat mode again.
- The process of a "Flash Cure" is there to lock the gel in place and prevent it from flooding the cuticle area and side walls of the nail.
- Continue to work on all 10 fingers, finishing with the thumbs. To complete the curing process cure the set fully on a low heat mode for 60 sec. with LED or 120 sec. UV.
- Remove the inhibition layer with a Nail Surface Cleanser in order to file and shape the nail.
- Continue with the rest of the manicure service. There is no need to apply a base coat for the Gel Polish Colour application.





## PRODUCT REMOVAL

- Sanitise your hands and the client's hands.
- Reduce the nail length.
- Using a 150 grit manual file or an e-file (if trained) and take down the bulk of the product from each nail.
- Work around various areas of the nail to avoid heat build up to the natural nail and discomfort for the client.
- Change to a 180 grit file as you get closer to the natural nail.
- Once the product is thinned down soak a Gellifique® Lint Free Wipe in Acetone, place on the nail and wrap in tin foil. Soak for 15 minutes and scrape off any softened product. Re - wrap if necessary and wait a further 5 - 10 minutes.
- Any left over product can be gently buffed off the nails.
- To start a new product application, please follow the relevant section in this application guide.
- Apply cuticle oil if there is no follow up manicure service. For a manual file removal we recommend switching from 150 grit nail file to a 180 grit file half way and then down to a 240 grit.

## RECOMMENDATIONS

- Always avoid skin contact with uncured products.
- Please do not attempt to remove any gel residue that is still hard.
- Please use the tools which you have been trained with for product removal.
- Please take care with pressure and use precision during the removal process in order to avoid overfiling the natural nail.

# HARD BUILDER GEL

## APPLICATION GUIDE

Please ensure that you are qualified in HARD UV/LED  
BUILDER GEL application to use this product.

### ESSENTIALS

- Dry manicure essentials
- Gellifique® Acid Free Bonder / Primer
- Gellifique® Nail Surface Cleanser
- Gellifique® HARD BUILDER GEL in a pot
- Gellifique® choice of Top and Base coat
- A 48W UV/LED lamp - 365nm x 405nm with a low heat mode

### PRODUCT FEATURES

- Vegan & Cruelty Free
- Premium Formula
- Low odour
- Self levelling
- Removes by filing
- Can be used for natural nail overlay, nail extensions with tips and forms



# APPLICATION GUIDE

## NAIL PREP

- Sanitise your hands and your client's hands.
- Whenever possible please wear gloves. We recommend completing all nail treatments in gloves to avoid contact of uncured products with skin.
- Do not use cuticle softening products or warm water.
- Perform a dry manicure by gently pushing back the cuticle area and removing any non living tissue. Use an e-file for this step if you are trained to use one.
- Using a 240 grit nail file shape the free edge of the nail.
- Using a buffer or a buffing block remove the shine from the entire nail plate.
- Remove the dust using a nail brush and cleanse the nail with a lint free wipe and Isopropyl Alcohol solution or a specialised cleanser such as Gellifique® Nail Surface Cleanser in "Malibu Sunset".
- Apply sparingly the Gellifique® Acid Free Nail Bonder / Primer to the natural nail and let it air dry. Avoid skin contact. Avoid using on clients with skin sensitivities.

## PRODUCT APPLICATION

- Apply a thin layer of Gellifique® Microcrystal Base Coat and cure for 30 seconds LED or 120 seconds UV.
- Apply a medium sized bead of Hard Builder Gel and spread it side to side moving the product down towards the free edge. Place the hand upside down for a few seconds to allow the product to self level.
- To ensure the best application around the cuticle area take the Gellifique® Liner Brush and using the tip move the product around the cuticle area and down the side walls for an even coverage.
- Avoid thick product build up around cuticle areas as this will cause the product to lift later. Seal the free edge with product. Cure 60 seconds LED or 120 seconds UV.
- Once you have achieved the desired length of the extension wipe the inhibition layer off with the Gellifique® Nail Surface Cleanser and file the enhancement into the desired shape.
- Use a nail brush to remove dust and cleanse again as above.
- Continue with the rest of the manicure service. There is no need to apply a base coat for the Gel Polish Colour application.

## PRODUCT INFILL / REBALANCE

- Sanitise your hands and your client's hands.
- Whenever possible please wear gloves. We recommend completing all nail treatments in gloves to avoid contact of uncured products with skin.
- Using a manual file or an e-file (if trained) file away any lifted product and roughen the nail surface using a 180 / 150 grit file. File and shape the nail and cleanse as you would normally to remove product dust.
- Apply sparingly the Gellifique® Acid Free Nail Bonder / Primer to the natural nail and let it air dry. Avoid skin contact. Avoid from using on clients with skin sensitivities.
- Apply a thin coat of Base Coat by Gellifique® to the entire nail surface including the remaining nail enhancement and cure 60 seconds with LED or 120 seconds UV. Repeat the process on the other hand.
- Working on one finger at a time apply a thin layer of the selected hard builder gel by Gellifique® and without curing place a small bead of product close to the cuticle area and move the product down the nail towards the free edge. Allow the product to self level.
- To ensure the best application around the cuticle area take the Gellifique® Liner Brush and using the tip move the product around the cuticle area and down the side walls for even coverage.
- Flash cure in the lamp on a low heat mode with LED or 120 seconds UV and move to the other hand repeating the process. As soon as you have completed the infill on the opposite hand, flash cure by starting the low heat mode again.
- The process of flash cure is there to lock the gel in place and prevent it from flooding the cuticle area side walls of the nail.
- Continue to work on all 10 fingers, finishing with the thumbs. To complete the curing process cure the set fully on a low heat mode with LED or 120 seconds UV.
- Remove the inhibition layer with the Gellifique® Nail Surface Cleanser in order to file and shape the nail.
- Continue with the rest of the manicure service. There is no need to apply a base coat for the Gel Polish Colour application.





## PRODUCT REMOVAL

- Reduce the nail length.
- Using a 100/150 grit file manual file or an e file (if trained) and take down the bulk of the product from each nail.
- As you reach the natural nail using lint free wipe cleanse the nail with the Gellifique® Nail Surface Cleanser to reveal any shiny spots where the product still remains.
- Finish removing the rest of the product with a buffer to avoid damaging the natural nail.
- File and smooth the nail surface with a soft buffer.
- Apply cuticle oil.



## RECOMMENDATIONS

- Always avoid skin contact with uncured products.
- A true Hard Builder Gel formula like ours can not be removed by soaking off so please do not use this removal method for this line of products.
- Please use the tools which you have been trained with for product removal.
- Please take care with pressure and use precision during the removal process in order to avoid overfiling the natural nail.
- For a manual file removal we recommend switching from 150 grit nail file to a 180 grit file half way and then down to a 240 grit.
- Please always exercise your professional judgement and advise your customer on an appropriate nail enhancement treatment depending on the condition of their natural nails.

# ACRYLIC GEL

## APPLICATION GUIDE

Please ensure that you are qualified in UV/LED POLYGEL, ACRYLIC GEL OR ACRYGEL application to use this product

### ESSENTIALS

- Dry manicure essentials
- Gellifique® Acid Free Bonder / Primer
- Gellifique® Nail Surface Cleanser
- Gellifique® ACRYLIC GEL
- Gellifique choice of Top and Base coat
- A 48W UV/LED lamp - 365nm x 405nm

### PRODUCT FEATURES

- Vegan & Cruelty Free
- Premium Formula
- Odourless
- No exothermic reaction (heat spike)
- Sets after curing
- Files easier than Hard Builder Gel or Acrylics
- Can be used for natural nail overlay, nail extensions with tips and forms



# APPLICATION GUIDE

## NAIL PREP

- Sanitise your hands and your client's hands.
- Whenever possible please wear gloves. We recommend completing all nail treatments in gloves to avoid contact of uncured products with skin.
- Do not use cuticle softening products or warm water.
- Perform a dry manicure by gently pushing back the cuticle area and removing any non living tissue. Use an e-file for this step if you are trained to use one.
- Using a 240 grit nail file shape the free edge of the nail.
- Using a buffer or a buffing block remove the shine from the entire nail plate.
- Remove the dust using a nail brush and cleanse the nail with a lint free wipe and Isopropyl Alcohol solution or a specialised cleanser such as Gellifique® Nail Surface Cleanser in "Malibu Sunset".
- Apply sparingly the Gellifique® Acid Free Nail Bonder / Primer to the natural nail and let it air dry. Avoid skin contact. Avoid using on clients with skin sensitivities.

## PRODUCT APPLICATION

- Apply a thin layer of Gellifique® Microcrystal Base Coat and cure for 30 seconds LED or 120 seconds UV.
- Squeeze the correct amount of product and "slice it" using an Acrylic Gel Brush / Spatula. Apply the product to the nail bed.
- Decant Isopropyl Alcohol Solution into a dappen dish, dip your brush into the liquid and press, pat and smooth the product to shape and form your nail overlay or extension.
- Once your structure and shape has been achieved cure with LED for 60 seconds or 120 seconds UV.
- Wipe off the inhibition layer with the Gellifique® Nail Surface Cleanser and file the enhancement into the desired shape.
- Use a nail brush to remove dust and cleanse again as above.
- Continue with the rest of the manicure service. There is no need to apply a base coat for the Gel Polish Colour application.

## PRODUCT INFILL/ REBALANCE

- Sanitise your hands and your client's hands.
- Whenever possible please wear gloves. We recommend completing all nail treatments in gloves to avoid contact of uncured products with skin.
- Using a manual file or an e-file (if trained) file away any lifted product and roughen the nail surface using a 180 / 150 grit file. File and shape the nail and cleanse as you would normally to remove product dust.
- Apply sparingly the GellifiQue® Acid Free Nail Bonder / Primer to the natural nail and let it air dry. Avoid skin contact. Avoid using on clients with skin sensitivities.
- Apply a thin coat of Base Coat by GellifiQue® to the entire nail surface including the remaining nail enhancement and cure for 60 seconds LED or 120 seconds UV.
- The unique, paste - like formula of GellifiQue® Acrylic Gel allows application of the product on all 10 fingers and provides unlimited working time.
- Squeeze the correct amount of product and slice it using an Acrylic Gel Brush /Spatula. Place the product to the nail bed. Shape and cure as above.
- Wipe off the inhibition layer with the GellifiQue® Nail Surface Cleanser and file the enhancement into the desired shape.
- Use a nail brush to remove dust and cleanse again as above.
- Complete the rest of the manicure service. There is no need to apply a base coat for Gel Polish Colour application.







## PRODUCT REMOVAL

- Reduce the nail length
- Using a 100 grit manual file or an e-file (if trained) take down the bulk of the product from each nail.
- As you reach the natural nail using a lint free wipe cleanse the nail with the Gellifique® Nail Surface Cleanser to reveal any shiny spots where the product still remains.
- Finish removing the rest of the product with a buffer to avoid damaging the natural nail.
- File and smooth the nail surface with a soft buffer.
- Apply cuticle oil

## RECOMMENDATIONS

- Please note Gellifique® Acrylic Gel is very easy to file so please exercise a great degree of precision during the removal process.
- Please use the tools which you have been trained with for product removal.
- For a manual file removal we recommend switching from 150 grit nail file to a 180 grit file half way and then down to 240 grit.
- Please always exercise your professional judgement and advise your customer on an appropriate nail enhancement treatment depending on the condition of their natural nails.

# PRECISION QUICK TIPS APPLICATION GUIDE

Please ensure you have the correct training required for application and removal of Artificial Nail Tips.

GellifiQue® Precision Quick Tips are a full cover artificial nail system which offers a great alternative to using other tip or sculpt products such as Acrylic or Gel.

These are not your average nail tips.

Made out of dissolvable, premium - grade polymer this GellifiQue® System offers an artificial nail tip with superior clarity, flexibility and strength. Thus, reducing your manicure service time in half.



# APPLICATION GUIDE

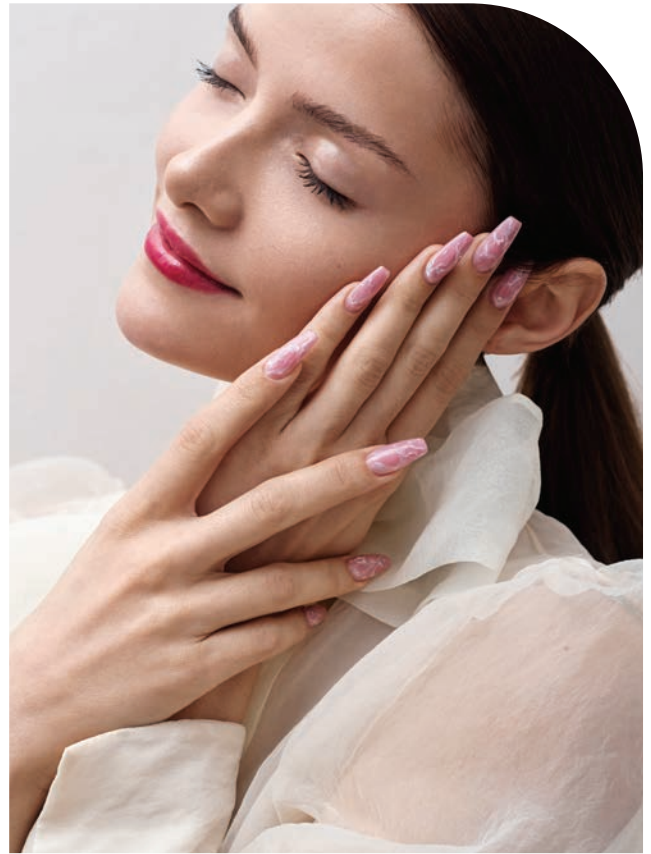
## NAIL PREP

- Sanitise your and your client's hands.
- Using your choice of remover ensure the client's nails are completely free from polish or gel.
- Perform a dry manicure removing any non-living tissue with cuticle nippers.
- Reduce the length of nails to around 2mm. Gently remove the shine using a nail buffer and remove remaining dust with Isopropyl Alcohol solution.
- Size your Precision Quick Tips so that the side walls of the tips are parallel to the growth channels and the nail fits from sidewall to sidewall comfortably. Make a note of the sizes used for each client for their next visit.
- Crucial step: Remove completely the shine on the inside well area of the tip using either a coarse grit file, e-file or using the Gellifique™ Oval Gel Brush melt the well area with some Acetone. This must be done in order for correct adhesion to take place.
- Once all 10 tips are etched, remove any remaining dust and apply Bonder or Primer on the inside of the tip.
- If you require extra adhesion apply the Gellifique™ Acid-Free Bonder to the natural nail avoiding skin contact



## APPLYING RUBBER BASE COAT

- Apply a thin coat of Gellifique® Medium Rubber Base Coat to the entire natural nail plate on all 5 fingers and cure for 60 seconds LED or 120 seconds UV.
- Repeat the process on the other hand.
- One nail at a time, apply a thin coat of Rubber Base Coat to the contact area and then a bead to the cuticle area of the nail tip. This amount will vary depending on the shape and length of the tip you are using and your client's nail bed so adjust as necessary.
- Please allow enough space to be left so when you press the nail tip into place the empty space gets filled with the product and covers the entire length of the client's nail.



## APPLYING THE TIP

- Align the tip to the nail and starting at the cuticle area at a 45-degree angle gently press it down into place allowing the Rubber Base Coat to evenly spread across the hollow area of the tip and flow down the natural nail.
- You should not have any bubbles or missing areas of gel, likewise, you should not have any gel coming out from either side of the tip.
- You should not have any bubbles or missing areas of gel, likewise, you should not have any gel coming out from either side of the tip.
- Please clean any residue or extra product away prior to curing.

## CURING THE NAIL ENHANCEMENTS

- Ensure the nail is not pressed down too much or angled downwards. Once you are happy with the positioning of the nail tip and ensure that there are no gaps or air bubbles. Carefully press on the nail tip to hold it in place and using your Gellifique® Pro Cure Mini UV/LED Lamp flash cure each nail for about 10/15 seconds.
- Repeat the step on each nail.
- Once all the nails have been flash cured into place, place the entire hand into the UV/ LED lamp and cure for further 60 seconds LED or 120 seconds UV.



## REFINE

- Once all the tips have been cured, refine the sidewalls and shape if needed.
- Remove the shine with a buffer or melt the surface with Gellifique® Acetone and a Lint Free Wipe to prepare for the application of Gel Polish Colour.

## REMOVAL

- Sanitise your own and your client's hands.
- Remove Gel Polish Colour using a hand file or an e-file if trained.
- Take down the length of the tip to the length of the natural nail.
- Wrap each finger with cotton wool and Gellifique® Acetone and leave to soak for 15-20 minutes.
- Push off any dissolved product using your cuticle pusher.
- Soak again if required.
- Gently buff off any remaining product and cleanse the natural nail plate.
- Avoid overfiling at all times as it will thin out the nail plate and can cause serious nail trauma.





GellifiQue Professional  
159 Great Junction Street  
Edinburgh  
EH6 5LG  
United Kingdom

✉ [info@gellifique.co.uk](mailto:info@gellifique.co.uk)

🌐 [www.gellifique.co.uk](http://www.gellifique.co.uk)

📷 [gellifique\\_gel\\_colour](https://www.instagram.com/gellifique_gel_colour)

📘 [gellifique ltd](https://www.facebook.com/gellifique ltd)